

TRANSVIEW DATA FUSION ENGINE

TRANSIT OPERATIONS MAP

TRANSVIEW DFE Transit Operational Map provides up-to-the-minute information on regional transit conditions.

The web-based tool allows users to access:

- Real-time transit vehicle location
- Travel direction
- Estimated arrival/departure times at rail stations and bus stops
- Transit incidents, construction, and special events on the regional transit network.

By clicking on the interactive map, users can drill down to detailed information about a specific vehicle or stop. The Transit Operations Map is part of the TRANSVIEW/DFE suite of products

MNR Location

SHOW ALL STOPS

Train # **552** to **Grand Central** on **Harlem**
will make the following station stops Last updated: just now

Station	Estimated Arrival Time (HH:MM)	Delay (In Minutes)
Bronxville	Arrived At 13:23	-
Fleetwood	Arrived At 13:25	-
Mt Vernon West	13:28	-
Wakefield	13:30	-
Woodlawn	13:32	-
Williams Bridge	13:35	-
Botanical Garden	13:37	-
Fordham	13:39	-
Tremont	13:41	-
Melrose	13:44	-
Harlem-125th St.	13:49	-
Grand Central	14:01	-

MTA NYCT Bus

Bus # **MTA NYCT 698** to **WASHINGTON HEIGHTS G W BRIDGE** on **West Farms Rd - Southern Blvd**
will make the following stops Last updated: just now

Previous stop SHOW ALL STOPS

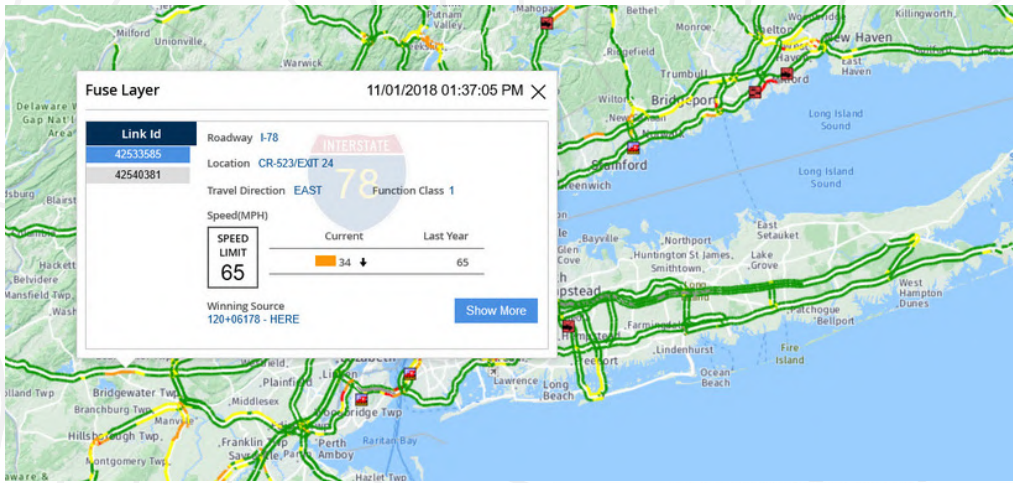
Stop	Estimated Arrival Time (HH:MM)
E 170 ST/COLLEGE AV	Arrived At 09:19
E 170 ST/SHERIDAN AV	Arrived At 09:21
E 170 ST/GRAND CONCOURSE	Arrived At 09:22
E 170 ST/WALTON AV	Arrived At 09:24
E 170 ST/JEROME AV	Arrived At 09:25

Next stop SHOW ALL STOPS

Stop	Estimated Arrival Time (HH:MM)
W 170 ST/EDWARD L. GRANT HY	09:27

Scheduled Details SHOW ALL STOPS

Stop	Scheduled Arrival Time (HH:MM)
W 170 ST/SHAKESPEARE AV	09:28
SHAKESPEARE AV/W 169 ST	09:29
W 168 ST/WOODYCREST AV	09:30

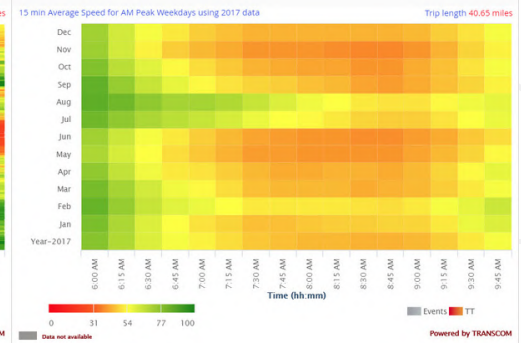
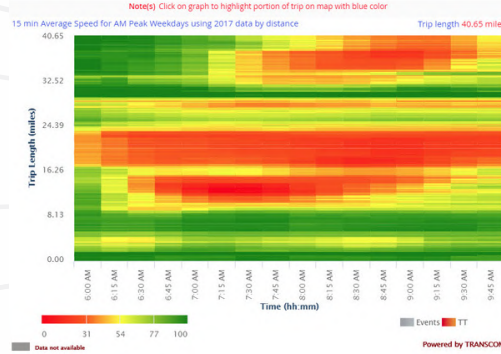


Operational Tools

- Operations Dashboard
- Corridor Viewer
- Project Viewer
- Zone Viewer
- Construction Conflict
- Travel Time Comparison
- Voice Assistant
- Operational Map
- Transit Operational Map
- AVL and Monitoring System
- Regional Conditions Viewer

Analytical Tools

- Event Playback
- Construction Conflict
- Travel Time Comparison
- Historical Travel Time Analysis
- Historical Event Search
- AVL and Monitoring System



Mapping Tools / Video Viewers

- Data Source Comparison
- Operational Map
- CCTV Viewer
- Video Wall Viewer

User Benefits

	Operational Tools	Mapping Tools	Analytical Tools	Video Viewers
Policy and Decision Makers	-	-	X	-
Agency Executives	X	X	X	-
Operations Staff	X	X	-	X
Operations Planning	X	X	X	-
Traveler Information	X	X	-	X
Planning Staff	-	-	X	-
Developers	X	X	X	-

About Infosenseglobal

Infosenseglobal has delivered advanced technology solutions and business initiatives backed by experienced, professional support to businesses across the globe since 2006. Our proven, leading practices and partnership-based project management approach combine to consistently deliver the very best client outcomes and exceptional levels of customer satisfaction. We focus on building partnerships and long-term relationships. Our teams are passionate and focus on innovation and quality. Because of this approach, we have retained 100% of our customers over the last 10 years.